



A BRIGHTER FUTURE FOR ALL IN GREATER MELBOURNE

Annual Report
2023 - 2024





ACKNOWLEDGEMENT OF COUNTRY

Lord Mayor’s Charitable Foundation recognises that we live, play, and work on the lands of the world’s oldest living culture, and acknowledge this privilege and responsibility with respect, humility, and willingness to listen and learn.

We acknowledge the Wurundjeri Woiwurrung peoples as the Traditional Owners and Custodians of the lands on which our office is situated, pay respect to their Elders past and present, and acknowledge their continuing connections to culture, community, land, and sea.

We extend that respect to all Traditional Owners and Custodians of Country, to all Elders past and present, and to the young leaders across Country, their voices, and the changes they are informing. We recognise the continuing connection to land, waters, community, and culture of all First Peoples, and support a Treaty with Victoria’s First Peoples.

.....
Cultural Awareness training day 2023; Birrarung.

Contents

YEAR IN REVIEW

About Us	4
From the Chair	5
Highlights	6
From the Chief Executive Officer	7
Walking alongside First Nations	8
Reconciliation Action Plan	9
For Purpose Impact Accelerator Hub	10

OUR SOCIAL IMPACT

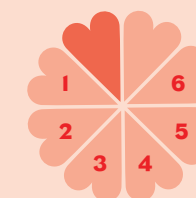
Giving & Grants Snapshot	11
The Eldon and Anne Foote Trust	12
Healthy & Climate Resilient Communities	14
Homelessness & Affordable Housing	16
Inclusive, Sustainable Economy & Jobs	18
Generous Melbourne	20
Youth in Philanthropy	21

OUR GIVING COMMUNITY

Charitable Fund Accounts	22
Swanson Society	24
Fifty Years of Giving	25
Community Charitable Funds	26
Collective Giving	28
Celebrating a Decade of Impact	29

FINANCE AND GOVERNANCE

Finance and Investment Report	30
Consolidated Statement of Profit or Loss	34
Consolidated Statement of Financial Position	35
Declaration by Members of the Board	36
Independent Auditor’s Report	37
Board Members	38
Grants Advisory Panels, Independent Committee Members and YiP Coaches	39
Our Staff	39



COVER

1. The Beautiful Bunch
2. HoMie
3. Good Cycles
4. Former Deputy Chair Dr Sandra Hacker AO
5. Youth in Philanthropy 2023
6. For Purpose Impact Accelerator Hub

Thank you to our donor community and grant partners for providing photos and permission to use their photos featured throughout our 2023/24 Annual Report.

About us

A brighter future for all in Greater Melbourne

At Lord Mayor’s Charitable Foundation, we are creating a community of social change makers who are courageous and innovative in addressing Greater Melbourne’s social issues and environmental challenges.

We are collectively committed to improving the lives of people who are vulnerable and experience disadvantage. We place social justice, equity and fairness for all people at the heart of everything we do.

Looking forward to the future

Throughout this year, we have been working towards our vision for Greater Melbourne as a city for people and communities to thrive, to be resilient and with strong connections to place.

With support from our community of donors and grant partners we are working to create a better, brighter future for Greater Melbourne - one that is inclusive, sustainable, and empowers people who are vulnerable to participate in community life.

Our vision

Our vision is for a resilient and inclusive Greater Melbourne for all people supported by our inspiring philanthropy.

Our strategic approach

- To support innovative and effective solutions
- To build a strong for purpose sector
- To convene and participate in impactful collaborations and networks
- To partner with our donors to achieve their philanthropic goals.



From the Chair

LOOKING FORWARD TO THE FUTURE



The Lord Mayor’s Charitable Foundation’s centenary year marked a time of celebration, thoughtful reflection, and inspiring progress. As one of Australia’s foremost philanthropic organisations, we have long been dedicated to addressing the critical issues facing our community through innovative and scalable solutions. This year, our impact was felt deeply across Greater Melbourne, reinforcing our commitment to creating lasting social change.

The centenary celebrations were anchored by the launch of the For Purpose Impact Accelerator Hub, a dynamic space designed for purpose-driven organisations. It has quickly grown into a vibrant community hub, fostering collaboration and hosting events with our partners. This initiative underscores our commitment to empowering organisations that align with our vision of a more inclusive and resilient community.

We also embarked on an important reconciliation journey with Melbourne’s First Nations peoples, which we hold as a central part of our future work. Our first Reconciliation Action Plan is set to launch later this year, reflecting our long-term commitment to meaningful engagement with Indigenous communities and advancing reconciliation.

We farewelled our Chief Executive Officer, Dr Catherine Brown OAM, whose leadership over the past 12 years has transformed the Foundation. Under Dr Brown’s stewardship, we saw the launch of key initiatives such as the Affordable Housing Challenge, social impact investment projects, and the modernisation of the Foundation’s Act of Parliament. Her thoughtful and inspirational leadership has left an indelible mark on the Foundation.

We extend our thanks to Paul Bird, former Chair of the Board, for his leadership during the centenary year and his five years of dedicated service as a Board member.

With Peter Walton now at the helm as Chief Executive Officer, we look forward to an exciting new chapter. Peter brings a wealth of experience in transformative philanthropy and a commitment to systems change, and place based locally led development.

As our centenary celebrations draw to a close, our focus now shifts to the future. We continue to ask important questions: Where can the Foundation make the most significant impact? How can we address the challenges facing Greater Melbourne with bold and brave action?

On behalf of the Board and staff, I would like to extend our heartfelt thanks to our generous donor community and remarkable partners. Your unwavering support enables the Foundation to continue its pursuit of positive social change.

We look forward to the future with optimism and determination, with reconciliation, sustainability, and social justice guiding every step of our journey.

Warm regards,

Janina Gawler
Chair
Lord Mayor’s Charitable Foundation



Lord Mayor’s Charitable Foundation’s Chair, Janina Gawler and CEO Peter Walton with Lord Mayor Sally Capp AO.

Highlights

A YEAR OF CELEBRATIONS AND NEW HORIZONS



JULY 2023

Youth in Philanthropy Forum

WISE Grant Round Launch

WISE Grant Recipient, Sisterworks.



AUGUST 2023

Innovation Grants Launch

Housing support for women, Homelessness & Affordable Housing Impact Area.



SEPTEMBER 2023

Include a Charity Event

Event guest speaker, Jasper Pittard Co-founder at Footy for Climate.



OCTOBER 2023

Youth in Philanthropy Insights Event

Event guest speakers, Jack Howes Head of Funding and Partnerships at HoMie and Anna Donaldson founder and former CEO at Lively.



NOVEMBER 2023

For Purpose Impact Accelerator Hub Officially opened by Lord Mayor Sally Capp AO



DECEMBER 2023

End of Year Donor Celebration

Event guest speaker, Mastura Mokhtar, Associate Architect at Six Degrees Architects.



JANUARY 2024

Foundation farewells CEO Dr Catherine Brown OAM



FEBRUARY 2024

Foundation welcomes Janina Gawler as Chair and Bernadette Murdoch as Deputy Chair



MARCH 2024

Youth in Philanthropy Forum

Event guest speaker, Aishah Brockhoff, Youth in Philanthropy Ambassador.



APRIL 2024

Foundation welcomes new CEO Peter Walton



MAY 2024

Foote Meeting Room officially opened by Mrs Anne Foote

GIVE Melbourne Appeal Launch

Reconciliation Week



JUNE 2024

Swanson Society Morning Tea

Swanson Society guests, former Board member Ruth O'Dea and Tom O'Dea.

From the Chief Executive Officer



EFFECTIVE GIVING TO SUPPORT REAL CHANGE

From the moment I stepped into the role of Chief Executive Officer, I felt both honoured and privileged to lead this remarkable foundation. Over the past 101 years, Lord Mayor's Charitable Foundation has achieved incredible milestones, but what excited me most was the mandate and the platform to fundamentally make a difference in our community at a time when so many people are experiencing disadvantage. I am excited about the future and the possibilities that lie ahead. I know that the Foundation will be at the forefront of making a genuine difference.

As we conclude our current strategic plan, we are already beginning the process of determining our future direction. At the heart of our strategic planning will be a focus on fairness and sustainability; social justice and equity. This people-centred approach, being a foundation in and of community, one that seeks to be a catalyst and amplifier of the action we need to take to not only meet the needs and challenges of today, but also those that we anticipate in the coming years.

As a charitable foundation for Greater Melbourne and its region, we work with communities to help them tackle immediate needs and the root causes of our society's interconnected challenges.

We are dedicated to building communities that are connected and resilient to the vulnerabilities of extreme weather, disasters and other challenges. We play a unique role in ensuring that we connect community giving and more effective philanthropy to the activity, action and advocacy that results in real change. In short, we aim to create a relatively unique place for structured giving that makes a lasting impact.

I would like to extend my heartfelt thanks to our donor community for their unwavering support. Your generosity enables us to continue our mission and make a difference in the lives of so many.

A very special mention also to our Board and staff for their dedication and hard work (and for making me feel so welcome). Together, we are an organisation on the move, constantly reinventing ourselves to stay ambitious, forward-looking, and focused on solutions and genuine impact.

Thank you for being a part of this journey. I look forward to what we will achieve together in the years to come.

Warm regards,

Peter Walton
Chief Executive Officer
Lord Mayor's Charitable Foundation



Lord Mayor's Charitable Foundation staff welcome new Chief Executive Officer, Peter Walton, April 2024.

Walking alongside First Nations

FOCUS ON FIRST NATIONS GRANTS

Lord Mayor's Charitable Foundation recently reviewed its grant partnerships with First Nations organisations and communities over the last ten years. The review showed that we have increased our grants funding in support of First Nations people from \$161,000 in 2013 to \$1.26 million in 2023.

Most importantly, the analysis shows how the Foundation's growing understanding of what it means to support self-determination is reflected in our granting. That is, our grants funding has shifted from organisations that support First Nations peoples, to funding First Nations led organisations.

Our granting supports work led by various First Nations organisations and those working in genuine partnership with First Nations led organisations, that aligns with our strategic goals and outcomes, particularly regarding social justice.



Yawa - Journeying Together painting co-ordinated and led by Bunurong artist Steve Parker.

First Nations Grants 2024

Environmental Justice Australia
Legally empowering First Nations people to care for Country

Invasive Species Council Fund
Voice of Country: Creating a culture that cares and collaborates to protect Country

Royal Melbourne Institute of Technology
Supporting Healthy Country and Communities

Seed Indigenous Youth Climate Network Ltd
Seed WA Youth Gathering

Stephanie Alexander Kitchen Garden Foundation
Strengthening community/food system resilience through the Culture+Kinship Model

Strong Mothers Inc
Pregnant Aboriginal mothers and infants first three years project

The Australian Centre for Social Innovation Inc
Yawa - Journeying Together

University of Melbourne
Working with Coranderrk on their *Unearthing Indigenous foods of Melbourne*

Victoria University - Moondani Balluk
Aboriginal Resilience and Future Imaginings

Victoria University - Aboriginal History Archive
Enhancing Aboriginal Health Worker advocacy and leadership

Weenthunga Health Network Inc
Nyarrngakgo mangkie On Country Retreat

Woor-Dungin Inc
Testing Woor-Dungin's "Decolonising Philanthropy: Cultural Audit and Toolkit"

Wurundjeri Woi-wurrung Cultural Heritage Aboriginal Corporation
Design and development of Wurundjeri Educational Resources and School Display Units

Reconciliation Action Plan

This year we continued to work on our first Reconciliation Action Plan (RAP). Our Reflect RAP has assisted us in furthering our reconciliation journey. A detailed action plan was submitted to Reconciliation Australia for review and was approved.

We have since formed a staff committee to implement our Reflect RAP including undertaking a design process inhouse and working with Murrup Biik Public Art to feature *Binak Etching* by Aunty Kim Wandin on the cover.

We continue to strengthen our commitment to reconciliation. This year we participated in Reconciliation Week and NAIDOC Week by featuring and celebrating our First Nations grant partners and participated in cultural learning activities. We established a RAP book club and worked through Clare Land's book, *Decolonising Solidarity*.

We have conducted a review of cultural learning needs for our staff and Board, implementing a range of activities to enable this learning. We joined Philanthropy Australia's First Nations Funders Group and the Australian Environmental Grantmakers Network's Indigenous Land and Sea Funders Network to learn more about best practice philanthropy in partnership with First Nations organisations.

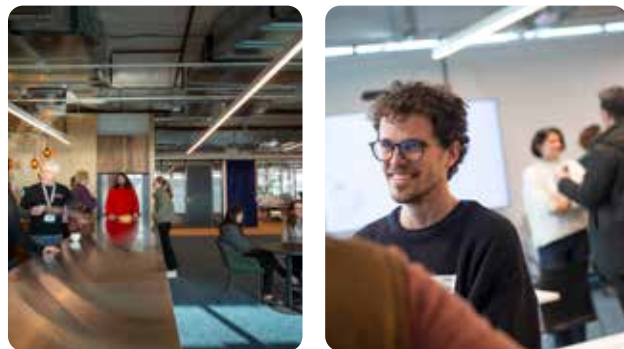
Birrarung (Yarra River) at Abbotsford.

For Purpose Impact Accelerator Hub

CREATING A VIBRANT FOR PURPOSE COMMUNITY

Lord Mayor's Charitable Foundation officially opened its new For Purpose Impact Accelerator Hub in November 2023, welcoming donors and grant partners to join in the opening celebrations.

The Hub has become a gathering place for nonprofit leaders, service innovators, social enterprises, thought leaders, and philanthropic supporters, all collaborating and working with a shared vision - to transform Greater Melbourne as an inclusive and sustainable city.



Highlights from November 2023 to 30 June 2024

10 FOR PURPOSE ORGANISATIONS WORK AT THE HUB

Australian Multicultural Community Services	Benefolk
Good Cycles	Infoxchange
Lord Mayor's Charitable Foundation	Newsboys Foundation
Public Interest Journalism Initiative	Regen Melbourne
STREAT	Sweltering Cities

87 PEOPLE WORK AT THE HUB

56 SPECIAL EVENTS & WORKSHOPS

Awards nights	Briefing sessions
Fundraisers	Information sessions
Meetings	Planning days
Presentations	Seminars
Large meetings	Workshops

9 SOCIAL ENTERPRISES SUPPORTING EVENTS AT THE HUB

Asylum Seeker Resource Centre Catering	Fruit 2 Work
STREAT	Taboo
Thank you	The Beautiful Bunch
Waverley Catering	Who Gives a Crap
Yarn'n	

< The For Purpose Hub's Collaboration Space has become a very busy and vibrant place for events, workshops, planning sessions, discussions and presentations.

OUR SOCIAL IMPACT

Giving & Grants Snapshot

Our giving and grants programs are thoughtfully designed to address the pressing social issues affecting Greater Melbourne today, linking effective philanthropy as part of the solutions to drive the positive social change required to create a brighter future for Greater Melbourne.

2024 GRANTS

\$11.457M

STRATEGIC GRANTS

167

\$2.106M Healthy & Climate Resilient Communities

\$2.355M Homelessness & Affordable Housing

\$2.248M Inclusive, Sustainable Economy & Jobs

\$1.598M Generous Melbourne (Sector Capacity Building)

\$146k Youth in Philanthropy

IMPACT LENS

17% grants First Nations

18% grants Women and Girls

32% grants Climate Resilience

67% grants First Funder

UNITED NATIONS SUSTAINABLE DEVELOPMENT GOALS

This year, we continued to support six Sustainable Development Goals (SDGs) with several projects contributing to more than one SDG.



DONOR ADVISED GRANTS

Our donors bolster the collective effort to create a better fairer Greater Melbourne through their granting.

CHARITABLE FUND ACCOUNTS

Charitable fund accounts

279

Donor advised grants

211

COMMUNITY CHARITABLE FUNDS

Local Government Areas with Community Funds

11

Donor advised grants

38

CORPUS

Corpus

\$262M

Decarbonisation

40% of investments

The Eldon & Anne Foote Trust

CELEBRATING ELDON FOOTE QC AND ANNE FOOTE

Lord Mayor’s Charitable Foundation Board and staff welcomed Mrs Anne Foote to the Foundation’s new For Purpose Impact Accelerator Hub to officially open the Foote Meeting Room.

The new meeting room was named in honour of Mrs Foote and her husband Mr Eldon Foote QC.

Mr Foote passed away in 2004 leaving a significant gift in his Will to support the Foundation’s strategic grant making program. This unparalleled generosity has enabled the Foundation to amplify its positive social impact and support for a broad spectrum of for-purpose organisations.

The Foundation’s Chair, Janina Gawler, acknowledged the incredible generosity of Mr and Mrs Foote, and recognised the significant impact their philanthropy continues to have on Greater Melbourne and across Australia.

“On behalf of Lord Mayor’s Charitable Foundation, I would like to acknowledge and pay tribute to your incredible philanthropy and contributions made to the people of Greater Melbourne and more broadly across Australia.”

Areas of Interest

Grants have been made across all Areas of Interest specified in the Foote Deed of Gift.

AREAS OF INTEREST	TOTAL \$
Arts	15,000
Athletics	100,000
Education	502,215
Environment	1,206,160
Health	1,087,936
Heritage	70,000
Medical Research	95,000
Recreation	20,000
Social Causes	4,051,427



(Above) The late Mr Eldon Foote QC and Mrs Anne Foote, 2002.

Mrs Foote’s Donor Advised Grants Program

The Foundation continues to support Mrs Foote with her philanthropy through her annual grants program as part of The Eldon and Anne Foote Trust.

ARTS	GRANT \$	HEALTH	GRANT \$	RECREATION	GRANT \$
Outloud Inc Connecting Professional Artists with a Disability	15,000	hearts4heart Support for High Risk Cardiovascular Communities	25,000	Children’s Protection Society Community Integration Program	20,000
EDUCATION		National Centre for Childhood Grief Australia Ltd (ACT) Online Bereavement Counselling for Bereaved Children	20,000	SOCIAL CAUSES	
B’nai B’rith Courage to Care Social Enterprise	25,000	Remount Ltd Mental Health Support to Veterans and First Responders	20,000	Achieve Foundation Ltd Empowering Change through the Disability Inclusion Narrative	25,000
Jane Goodall Institute Australia Public Fund Trust (NSW) ReWild Your School	20,000	Strong Mothers Inc Pregnant Aboriginal Mothers and Infants First Three Years Project	20,000	Canberra Symphony Orchestra Donations (ACT) Community Programming	20,000
SisterWorks Inc Championing Migrant and Refugee Women Entrepreneurs	30,000	Sydney Children’s Hospitals Foundation Ltd (NSW) The HARK Clinic Health Assessment for Refugee Kids	20,000	Guide Dogs NSW/ACT Guide Dog Partner	50,000
The Cool Australia Trust Literacy and Sustainability for Tomorrows Leaders	30,000	University of New South Wales Australian Climate Accountability Project	30,000	Guide Dogs Victoria Puppy Sponsorship - Graduate	50,000
ENVIRONMENT		HERITAGE		La Trobe University MamaTalk Scale Up: Supporting newly arrived women during pregnancy	25,000
Invasive Species Council Fund Voice of Country	20,000	Bay Steamers Maritime Museum Steam Tug Wattle	20,000	The Legacy Club of Brisbane Ltd Family Assist Program Case Management	20,000
La Trobe University Supporting Healthy Communities	25,000	MEDICAL RESEARCH		The Royal Society for the Prevention of Cruelty to Animals (ACT) Inc Kitten Condos	30,000
Macquarie University (NSW) Empowering Climate Resilience	30,000	Black Dog Institute (NSW) Is technology making our kids sad and anxious?	20,000	UCA - Hotham Mission WomEmpower	15,000
Seed Indigenous Youth Climate Network Ltd Seed WA Youth Gathering	40,000	Garvan Institute of Medical Research (NSW) Improving Progressive Supranuclear Palsy Diagnosis	25,000	Women and Children First Ltd Fast Track to Independence Program	25,000
Wentworth Group of Concerned Scientists Foundation National Land Initiative	30,000	St Vincent’s Hospital (VIC) Supporting Family Carers of People with Mental Health	30,000		
Trust For Nature (Vic) Land Tax Breaks For Urgent Environmental Action	30,000	The University of Queensland MadeHER origins and impacts of menstrual disorders and pelvic pain	20,000		

Healthy & Climate Resilient Communities

STRENGTHENING COMMUNITY RESILIENCE

The Healthy & Climate Resilient Communities Impact Area focused on working with priority communities and neighbourhoods on climate resilience, including First Nations, multicultural communities, and young people. We continue to support the Greater Melbourne Heat Alliance, the only forum for community and health organisations to come together to plan for heatwaves and work to reduce heat vulnerabilities.

Our support for First Nations' self-determination continues with a grant to Environmental Justice to work with Traditional Owners on addressing legal barriers to their caring for Country. We also continued to provide support for place-based, community-led climate justice through ongoing partnerships with organisations like Banksia Gardens Community Service in Broadmeadows.

Community Connector for Resilience

Our work on community climate change resilience by supporting the Community Connector for Resilience, continues to be an important conduit of organisations working on climate resilience. It is a collaborative of organisations and a website of curated resources, designed to help people, communities, and community organisations strengthen disaster and climate change resilience through sharing of information, resources, and inspiration across Victoria.



Wellsprings for Women

Celebrating their 30th anniversary, WellSprings for Women supports women from migrant and refugee backgrounds. The Foundation provided support to facilitate a safe space for these women to discuss their feelings and concerns for themselves and their families in a climate changing world, both here and in their home countries.

The women identified what a climate resilient community means to them and projects they want to lead with their communities. One of these is a community garden at AMES in Noble Park for food production, and for community connections.



2023/24 GRANTS

\$2.106M

OUTCOME 1:

Communities shape regenerative and just climate change resilience

OUTCOME 2:

Greater Melbourne's food systems are equitable, healthy, sustainable, and resilient

OUTCOME 3:

The health and community sectors can support community resilience to climate change and disasters, including pandemics and other shocks

OUTCOME 1	GRANT \$	OUTCOME 2	GRANT \$	OUTCOME 3	GRANT \$
PROACTIVE		PROACTIVE		PROACTIVE	
Melbourne Fringe Radical Access	43,000	STREAT Ltd Moving Feast - the next phase	75,000	Climate and Health Alliance Core Funding	154,000
Royal Melbourne Institute of Technology Supporting Healthy Country and Communities	86,160	University of Melbourne Unearthing Indigenous foods of Melbourne	75,000	Jesuit Social Services Limited Resilience Community of Practice	30,000
Sustain: The Australian Food Network Ltd Urban Agriculture Forum Melbourne 2023	5,000	Australian Neighbourhood Houses & Centres Assoc. Kensington Community Fresh Food Market	21,000	Sweltering Cities Ltd Heatwave scenario workshop	14,700
The Australian Centre for Social Innovation Inc Yawa - Journeying Together	69,281	Darebin Information Volunteer & Resource Service Inc DIVRS's Urban Farmer	89,000	Sweltering Cities Ltd Stage 2: Supporting Melbourne's heat resilience	75,000
Woor-Dungin Inc Decolonising Philanthropy: Cultural Audit and Toolkit	12,000	INITIATIVE		Victorian Council of Social Service Collaboration in Practice	47,500
Wurundjeri Woi-wurrung Cultural Heritage Aboriginal Corporation Educational Resources and School Display Units.	50,000	Stephanie Alexander Kitchen Garden Foundation Strengthening community/food system resilience through the Culture+Kinship Model	150,000	INITIATIVE	
Environmental Justice Australia Legally empowering First Nations people to care for Country	150,000	University of Melbourne Victorian food resilience planning project	92,832	Banksia Gardens Association Climate resilience in outer Melbourne	150,000
Foundation for Rural and Regional Renewal FRRR Community Resilience Resources	47,500	SEED INNOVATION		Cohealth Ltd Beating the heat in the north	15,000
INITIATIVE		La Trobe University Building resourceful responses to disruption in primary production in Victoria	28,088	SEED INNOVATION	
KooyongKoot Alliance Inc Connecting habitat and communities in the Gardiners Creek KooyongKoot Catchment	50,000	SCALING UP INNOVATION		EACH Multicultural Heat Heros Taking Action	46,117
Whittlesea Community Connections Inc City of Whittlesea Climate Resilience Group	50,000	Community Pop-Up Markets Building an equitable resilient and sustainable fresh food supply network in Melbourne	100,000	National Ageing Research Institute Ltd Community cooling centres for older people during heatwaves	49,400
SCALING UP INNOVATION				Royal Melbourne Institute of Technology Towards climate resilient families	36,283
Bentleigh Bayside Community Health Ltd Digital strategies for emergency prevention, response, management and recovery	150,000			SCALING UP INNOVATION	
Victoria University - Moondani Balluk Aboriginal Resilience and Future Imaginings	67,804			Victoria University - Aboriginal History Archive Enhancing Aboriginal Health Worker advocacy and leadership	104,292

Homelessness & Affordable Housing

SUPPORTING SOCIAL JUSTICE IN HOUSING FOR WOMEN

Homelessness & Affordable Housing works on a range of issues aimed at preventing homelessness. Last year, the Prime Minister declared family violence as a national crisis. Family violence is the leading cause of people attending specialist homelessness services and an area of continued focus for Lord Mayor's Charitable Foundation.

We continued to support projects and programs that provide women the agency and resources to stay safe and housed. In the last year, this includes Justice Connect's online resource developed for Victorian

renters who want to utilise new Victorian laws and write a personalised letter to their landlord about their safety and privacy needs.

We funded a training program and standards for community housing providers to response to family violence within their tenancies. We also helped McAuley Community Services for Women to plan a new approach allowing women and children experiencing family violence to remain safe in their own home, rather than moving them into temporary hotel accommodation or hiding them in refuges.

Western Integrated Services Partners (WISP)

Accessing a range of key services through a coordinated approach is the most effective and efficient way to support victim-survivors of family violence and people experiencing homelessness. Site-based service co-ordination and integration enables better access to safe, affordable, secure housing, good health, and economic security. It is evidence-based, and recommended time and time again through research and policy.

McAuley Community Services for Women has seen the benefits for women and children when utilising an integrated service model and aims to partner with other specialist services to create a multi-disciplinary service system across Melbourne's Western Metropolitan Region. This means that women and children can get the right supports, at the right time.

The collaboration includes McAuley Community Services for Women, GenWest, Refuge Vic, Caroline Chisholm Society, YWCA and Safe Steps, known as the 'Western Integrated Service Partners' or WISP. WISP will implement the project and co-ordinate the delivery of multi-disciplinary services in the key domains of housing, health, finance, legal, education, child wellbeing and employment.



2023/24 GRANTS

\$2.355M

OUTCOME 1:

Homelessness or entrenchment of homelessness is prevented

OUTCOME 2:

The supply of affordable, sustainable, and healthy housing is increased

OUTCOME 3:

Increased energy efficient and climate resilient homes for vulnerable households

OUTCOME 1	GRANT \$	OUTCOME 2	GRANT \$	INITIATIVE (cont.)	GRANT \$
PROACTIVE		PROACTIVE		Housing Choices Australia Ltd Essendon Fields Strathmore	50,000
Australian Red Cross Society Homelessness and Disaster National Symposium	15,000	Community Housing Industry Association Ltd Climate Poverty Survey	50,000	Launch Housing Ltd Footscray Baptist Church Redevelopment	50,000
Council to Homeless Persons 2023 Victorian Homelessness conference support	15,000	Community Housing Industry Association Ltd Next steps on SIGMAH tool social and environmental calculator	70,000	United Housing Cooperative Ltd Community Housing Project under construction in West Footscray	150,000
Council to Homeless Persons Bridging the gap between homelessness and family violence services	80,000	Community Housing Industry Association Ltd Assist social housing tenants move into home ownership	15,000	Village Well Community Centre Inc Ellingworth Affordable Housing	50,000
University of New South Wales Australian Homelessness Monitor 2024	60,000	Council to Homeless Persons Everybody's Home - Creating a Fair Housing Future	50,000	SEED INNOVATION	
SEED INNOVATION		Housing Choices Australia Ltd Making affordable housing for older women more investible	50,000	McAuley Community Services For Women Women Out West - building homes for women and children in Melbourne's west	50,000
Northern Community Legal Centre Inc Financial Divide	50,000	Melbourne City Mission Home Time: Fix housing for young people	20,000	SCALING UP INNOVATION	
SCALING UP INNOVATION		Monash University Cooperative housing model for middle income households	50,000	Housing Choices Australia Ltd Making affordable housing for older women more investible	150,000
Justice Connect A Home of Your Own: Keeping women and children safely housed	150,000	Open House Melbourne Inc Community Housing Open House Tours	30,000	OUTCOME 3	
McAuley Community Services for Women Western Integrated Services Partners (WISP)	75,000	SEFA Partnerships Ltd Philanthropic Housing Fund prospectus	35,000	GRANT \$	
Wombat Housing and Support Services Inc My Virtual Case Manager (WomBot) - Pilot	75,000	Swinburne University of Technology Site Amalgamation for Medium- Density Social Housing	50,000	PROACTIVE	
		INITIATIVE		Monash University Renovation Pathways Project	50,000
		Churches Of Christ Community Care Ringwood Church of Christ Property Redevelopment	685,000	Renew Australia Inc Getting Off Gas Toolkit	30,000
		Cornerstone Contact Centre Inc Feasibility study for affordable housing build on land owned by Dandenong Baptist Church	50,000	SEED INNOVATION	
		Fronthitha Care Affordable Housing Units Feasibility	50,000	Anika Legal Ltd Enhancing access to energy efficient housing for renters	50,000
				SCALING UP INNOVATION	
				Renew Australia Inc Getting Off Gas Toolkit	50,000

Inclusive, Sustainable Economy & Jobs

SUPPORTING PEOPLE IN SAFE AND SECURE JOBS

During the past year Lord Mayor's Charitable Foundation has supported critical work at the intersection of two issues, the cost of living crisis and escalating climate impacts. Whilst headline unemployment levels remained relatively low, it has been critical to support people facing barriers to work into safe and secure jobs.

Our continued support of the Social Enterprise eco-system has contributed to a shift in how social enterprises are being seen as part of the solution by governments. Through the WISE Grant Collaboration, the Foundation joined forces with six other funders to assist Work Integration Social Enterprises grow their capacity to deliver good jobs for people facing disadvantage.

Alongside this impactful 'on the ground' work, we have nurtured a portfolio of high impact projects aimed at influencing economic policy choices that prioritise people and communities experiencing cost of living and climate pressures. This work is wide ranging and includes mobilising local grassroots networks seeking local policy change and national movements working towards fair, fast and inclusive climate action.



WISE Grant Supports Expansion - Sisterworks

SisterWorks, a Melbourne-based not-for-profit social enterprise empowering migrant, refugee and asylum-seeker women, proudly opened its new Sustainable Production Hub in Springvale during Refugee Week.

The new facility will strengthen SisterWorks' existing capabilities, including assembling, packing, repurposing unwanted materials, upcycling and equipment rental and repairs. This initiative specifically targets the City of Greater Dandenong, a culturally rich area with the highest rate of families lacking a parent in paid employment in metropolitan Melbourne (31%).

Sisterworks Chief Executive Officer Ifrin Fittock said, "It is fantastic to receive this WISE grant, the support will allow us to not only increase our capacity and sustainability but we will be able to double the number of employment opportunities for migrant and refugee women in South East Melbourne. Women in this region encounter growing obstacles, and this support will significantly alleviate these challenges."



2023/24 GRANTS

\$2.248M

OUTCOME 1:

Relevant skills and capability, including social entrepreneurship, are increased

OUTCOME 2:

Quality jobs in clean, digital, and caring industries are created for job seekers

OUTCOME 3:

Enable our transition to an inclusive and sustainable economy that serves people and planet

OUTCOME 1	GRANT \$	OUTCOME 2	GRANT \$	OUTCOME 3	GRANT \$
PROACTIVE		WISE GRANTS (LMCF)		PROACTIVE	
Centre for Policy Development Ltd Investment Prospectus Western Melbourne Skills and Jobs Collaboration	50,000	Campbell Page Ltd EcoCrews	100,000	Australian Parents for Climate Action Ltd Clean Energy for Early Childhood Centres	50,000
University of Melbourne SEEDKit Stage II - Development Funding	29,992	Lively Community Ltd Spreading the impact of the Lively Helper youth employment model	87,311	Centre for Australian Progress Ltd Shifting economic narratives	75,000
		Merchant Road Events Inc Rooftop Roses by The Beautiful Bunch	50,000	Footy for Climate Ltd Climate transition for Australian Rules Football	100,000
		SisterWorks Inc South-East WISE Expansion: Making the difference where it's needed most	25,000	Peninsula Health Frankston Social Enterprise Hub	60,000
		PROACTIVE		Plan International Australia Gender Compass Stage 2	50,000
		Philanthropy Australia Ltd Resourcing the Jobs Skills Funders Network Extension	40,000	Small Giants Academy Ltd A Comprehensive City Portrait of Greater Melbourne	150,000
		Australian Council of Social Service Fair, fast, and inclusive action on climate change	175,856	Social Enterprise Australia Ltd Better than a social enterprise census	50,000
		INITIATIVE		The University of Sydney The Real Deal Project	50,000
		Australian Spatial Analytics Ltd Supported Transition Program	100,000	The Sunrise Project Australia Ltd Community Voices in Transition and the Big Ask	100,000
		CERES Earth Ltd CERES Fair Wood	50,000	The Trustee for Documentary Australia Accelerating Environmental Impact	75,000
		Free to Ltd Digital Marketing Employment Pathway Program	50,000	INITIATIVE	
		Good Cycles Ltd Good Spaces Tree Services Expansion	50,000	Sustain: The Australian Food Network Ltd Creating Pathways for New Urban Farmers	50,000
		Merchant Road Events Inc Bb Botanics	50,000	SCALING UP INNOVATION	
		Humans of Purpose Academy Ltd Integral Entrepreneurship Digital Futures	50,000	The Next Economy Ltd Heading Upstream: Building the Australian Wellbeing Economy	150,000
				Australian Solar Energy Society Smart Energy Gender Action Plan	125,000
				Beyond Zero Emissions Inc Cleantech Investment Hub	105,000
				Climate Council of Australia Ltd Supporting healthier, cleaner more affordable transport for all	150,000

Generous Melbourne

SECTOR CAPACITY BUILDING GRANTS

Lord Mayor's Charitable Foundation works on addressing key social and environmental issues in communities, recognising how important it is to support charitable organisations and encourage community giving.

The charitable sector plays a crucial role in Australia's wellbeing, especially in tough economic times, acting as a safety net for social and environmental needs. The Foundation is committed to ensuring that the charitable sector remains strong and can adapt to changing demands.

The Foundation also funds research to better understand community needs and to help grow the social and impact investment sectors.

2023/24 GRANTS

\$1.598M

OUTCOME 3:

An effective philanthropic and impact investment ecosystem, and a capable charitable sector support the achievement of our aspirations

OUTCOME 3	GRANT \$
PROACTIVE	
Australian Women Donors Network Collaborations Supporting Gender-wise Housing Investments	50,000
Centre for Australian Progress Ltd Progress Labs and Capacity Building Hub (stage 2)	130,000
CERES Earth Limited Support for expansion of CERES' role as a community hub	150,000
Community Council for Australia Ltd CCA Capacity and Engagement	65,000
Infoxchange Digital Future Fund	500,000
Justice Connect Supporting climate resilient communities through online legal help for not-for-profits	75,223
Philanthropy Australia Ltd Philanthropy Australia Strategic Plan Implementation	200,000
St Paul's Cathedral Welfare Service Inc St Paul's Cathedral Sustainable Heating	50,000
St Peter's Eastern Hill Melbourne Charitable Foundation Capacity Building Support	5,000
Sustain: The Australian Food Network Ltd Feasibility study 662 Plenty Rd Preston Oakhill	15,000
The Trustee For The Conversation Trust The Conversation on Cities	80,000
University of Canberra Eldon and Anne Foote Elite Athlete Scholarship Program	100,000
University of Melbourne Map of the Month Program (pilot)	84,000
Australian Environmental Grantmakers Network Accelerating climate philanthropy with the climate funders framework and lens	85,000
South Gippsland Conservation Society Inc Screw Creek Interpretive Trail at Inverloch	8,920



University of Melbourne, Map of the Month Program. March Map of the Month showing key 'bumping spaces' – libraries, neighbourhood houses and community centres – in Greater Melbourne.

Youth in Philanthropy

YOUNG CHANGEMAKERS LEADING THE WAY

Youth in Philanthropy (YiP) is a program that empowers young students in Greater Melbourne to learn about community philanthropy whilst making a meaningful, positive impact on the world around them.

In 2023, students from 13 schools across Greater Melbourne participated in the program undertaking activities in fundraising and grant making.

At the YiP23 Insights event in November, guest speakers Anna Donaldson, CEO at Lively and Jack Howes, Head of Funding and Partnerships at HoMie, provided the students with insight into how their organisations work to support young people to participate in training and employment in the caring and retail sectors.

Lord Mayor's Charitable Foundation would like to thank our incredible grant partners and supporters William Angliss Charitable Fund, Wheelton Philanthropy and Collier Charitable Fund for their ongoing support.

GRANTS

39

FUNDING

\$146k

SCHOOLS

13

GRANT PARTNERS

22

2023 SCHOOLS

- Australian International Academy
- Camberwell Grammar School
- Lauriston Girls' School
- Mac.Robertson Girls' High School
- Melbourne Girls' College
- Melbourne Grammar School
- Methodist Ladies' College
- Mt Scopus Memorial College
- Parade College
- Ringwood Secondary College
- Strathcona Girls Grammar School
- Trinity Grammar School
- Werribee Secondary College

GRANT PARTNERS

- Asylum Seeker Resource Centre Inc
- Australian Marine Mammal Conservation Foundation
- B'nai B'rith Courage to Care (Vic) Inc
- Children Australia Inc
- Conscious Creative Ltd (HoMie)
- Cultivating Community
- Enable Social Enterprises Ltd
- FareShare Australia Inc
- Friends of the Earth Melbourne Inc
- Habitat for Humanity Australia (Victoria) Inc
- Hope Street Youth and Family Services Inc
- Human Rights Law Centre Ltd
- Justice Connect
- L2R Next Gen Inc
- Lively Community Ltd
- Royal District Nursing Service Ltd
- Sacred Heart Mission Inc
- St Mary's House Of Welcome
- Sweet Justice
- Weenthunga Health Network Inc
- Western Chances
- Women's Property Initiatives Ltd



Students from across Greater Melbourne came together to learn about community philanthropy and how it is able to have a positive social impact. Photo credit: Hynesite Photography.

Charitable Fund Accounts

GIVING TOGETHER, FOREVER

Lord Mayor’s Charitable Fund is a public ancillary fund that brings together individuals, families and organisations who want to make a positive difference to people, places and the causes they care about.

Many chose to do this through a Charitable Fund Account, or sub-fund, to use a formal giving structure to enable strategic and perpetual support. They are frequently created to honour the memory of a loved one, to engage family members or employees in giving, and to ensure a lasting legacy.

The Foundation provides donors with guidance and support for grant making and manages all compliance, investment and financial matters. This enables donors to focus on their philanthropy and the impact of their giving.

We thank all our Charitable Fund Account holders for the trust and confidence they place in us to help them channel their giving in a way that is most meaningful to them and acknowledge the collective impact of the support they have provided to many charities.



(Above) The Foundation’s Philanthropy Engagement Lead, Samuel Byrne and Matthew Ety-Leal at the Swanson Society morning tea, June 2024.

List of Charitable Fund Accounts

A & D Richards Family Fund	Association of Civilian Widows Vic Fund	Boyce Family Fund	Capodanno Fund
A 2 Z King Family Fund	ASW Fund	Brian & Ella Talbot Family Fund	Caswell Charitable Fund
Airs Family Fund	Australian Multicultural Charitable Fund	Brown Rochford Family Fund	Chanelle’s Eye on the Horizon Memorial Fund
ALL ON 1 ACCORD Fund	Australian Universities Classical Scholarship Fund	Bruce & Robyn McQualter Family Fund	Cheryl & David Baer Family Fund
Allan Douglas (Doug) McPhee Fund	Barbara Leighton Fund	Bruce Maxwell Fund	Children’s Protection Society Inc. Fund
Anderson Fund	Barry & Joan Medwin Family Fund	Bruce Niven Fund	Chips Charitable Fund
Andrew James Lancashire Memorial Fund	Basstris Charitable Fund	Buchan Family Fund	Chloe Alexandra Rutherford Fund
Ann Rusden Fund	Berkovic-Fraenkel Family Fund	Bundilla Charitable Fund	Chris Dalwood Scholarship Fund
Anne White Fund	Bethany Wake Fund	Byrne Fund	Clara Sim Memorial Fund
Anthony Dalleore Educational Fund	Borchardt Fund	Caine Foundation Fund	Clive L Wright Fund
Antoinette & Edward & The Moylan Family Fund	Bowness Family Fund	Caitlin Darbyshire Fund	
		Cameron Family Charitable Fund	

Commercial Travellers Association of Vic Charitable Fund	Friends of Caroline Chisholm Society Fund	J & B Evans Dream Fund	Margaret Mitchell Fund	Payne Family Fund	Swinburne Philanthropy and Social Impact Alumni Sub-Fund (SPSIA)
Connon Family Fund	Friends of Rumbalara Fund	J & N E Brown Fund	Mark Kenneth Thorn Charitable Fund	Pepin Family Fund	Tan Family Fund
Craig Bell & Neven Paleka Fund	Fund for Rusty and Buddy	James Cross Memorial Fund	Marshall Fund	Peter & Karen Anderson Family Fund	Tenzing Fund
Cusack Family Fund	Gary Singer & Geoffrey Smith Fund	Jan Slaney Fund	Marshall-Roth Charitable Fund	Possibility Australia Fund	The Antaeus Charitable Fund
D & H Saltzman & Family Memorial Fund for Sheryl	Gavin, Michael & Jeremy Kessel Memorial Fund	Jarrold Alexander Green Memorial Fund	Masky Beacon Charitable Fund	Priestley Family Fund	The Guiding Light Fund
D D & S L Johnston Fund	Geoffrey & Pauline Green Fund	Jenny & Jim Gardiner Fund	McGauran Giannini Family Fund	PRL Charitable Fund	The John and Margaret (JOB & MOB) O’Brien Fund
Danielle Marie Galati Memorial Fund	Geoffrey K Williams (Edith & Carl Furner) Fund	Jill Chapman Fund	McLean Family Fund	R C & E M Bennett Fund	The Red Bowl Fund
Daryl Leslie Zvi Rosenfield Memorial Fund	Geoffrey K Williams (Gertrude & Jack Williams) Fund	John & Pegg Fund	Meg & Frank Sims Fund	Rayment Family Fund	The William Angliss (Victoria) Charitable Fund
Daryl Manley Fund	Geoffrey K Williams (Margaret & Howard Williams) Fund	John D & Dagnija Balmford Fund	Melbourne Women’s Foundation Endowment Fund	Red Bird Moments Charitable Fund	The William Angliss (Victoria) Charitable Fund
David & Miriam Rich Family Fund	Geoffrey K Williams Fund	Jones Family Fund	Melissa Ryan Princess Fund	Renshaw Fund	Tom & Ruth O’Dea Fund
Di Power Memorial Fund	Gerald Friedlander Family Fund	Joshua Bendel Fund	Melvin Banks AM DSJ Fund	Richard & Gwenyth Higgs Fund	Tom & Zillah Diamond Family Fund
Donald & Shirley Lugg Fund	GGG Fund	Judy (Gelb) Feiglin Memorial Fund	Mercedes-Benz Australia/Pacific Fund	Robert Croft Fund	Tozer Family Fund
Doos Family Fund	Giuliano Family Fund	June & Peter Stringer Charitable Fund	Michael Martin Fund	Rory McCaffrey Reconciliation Fund	Travelling with Tash Fund
Dora & Trevor Nixon Fund	Greg Blizzard Memorial Fund	June O’Brien Whitting Memorial Fund	Milledge Family Fund	RSL Fund	Victor & Shell Sykes Family Fund
Dorn Family Fund	Gringlas Family Fund	Kasey-Anne Lymphoma Charitable Fund	Mimi Kellett’s Charity Fund	Sally Graham Memorial Fund	Vulcan Family Fund
Dorothy Jean Ineke Fund	Haimson Family Fund	Kathy & George Deutsch Family Fund	Minyaka Fund	SANG Gandhi Charitable Fund	W H Overall Fund
Dr Margaret Rose Garrett Fund	Hansen Little Foundation Fund	Kaufman Family Charitable Fund	Moffatt Family Fund	Sawers & Sherman (KIA 1916) Memorial Fund	Wagalot Animal Welfare Fund
Duckie Charitable Fund	Harris Family Fund	Keith & Alison May Williams Fund	Morrison Family Fund	SB08 Conference Scholarship Fund	Walmsley Family Fund
Duncan Family Fund	Heath Cosgrove Charitable Fund	Kevin & Jacqui Clancy Family Fund	Motet Fund	SBMAJ Fund	Warburton Family Fund
E Bennett Fund	Heather Bradley Memorial Fund	Knight Family Fund	Nancy & Ian Wood (Gertrude & Jack Barker) Fund	Senator Tadeusz Kobylanski Fund	Warin Chiewwej & William Holder Charitable Fund
Easden Family Fund	Helen & Peter Devereux Fund	Kolganova & Foster Family Fund	Nancy & Ian Wood (Marjorie & Phillip Wood) Fund	Senza Nome Charitable Fund	Weber Jenkin Family Fund
Education for All Fund	Henry Buck’s Fund	L Semmens Fund	Nancy & Ian Wood Fund	Sharon & Peter Beaconsfield Fund	Wendy Hurse Fund
Eldon & Anne Foote Charitable Fund (Including part of Estate of Eldon Foote)	Hermits of El-Shaddai Charitable Fund	Lady Mayoress Committee Fund	Nine Lives Charitable Fund	Sharon & Peter Beaconsfield Fund	Weston Street United - Masonic Fund
Ellis W Waters Fund	Hoggart Family Fund	Laura Redgrave Charitable Fund	NJN Charitable Fund	Shirley Day Fund	Wexler Family Fund
Emanpea Fund	Homestead Financial Group Fund	Lawrence & Joan Cohn Fund	Norm & Pat Draper Charitable Fund	Shirley K B and David A Secomb Fund	Wheelton Philanthropy Fund
Emerson-Sullivan Fund	Hope Rutherford Reilly Fund	Left Hand Fund	North Bridge Fund	Simon Buckley Memorial Fund	White Fang Fund
Erasmus School Innovation Fund	Hopkins Knight Family Fund	Leighton Family Charitable Fund	O’Ryan Family Charitable Fund	SJD Charitable Fund	Wilfrid & Joan Minson Fund
Eric Burton Memorial Fund	Illingworth Family Fund	Lord Mayor’s Children’s Fitness Fund	Oldfield Family Fund	Slome-Topol Family Charitable Fund	William A Lyon Fund
Evan Spurway Fund	In Memory of Servicemen & Women who did not return Fund	Loftus-Hills Fund	Olga Edith Lowe Memorial Fund	Smyth Family Fund	Wootton Family Fund
Falkinger Heritage Fund	Israel Rosenfield Memorial Fund	Logan Family Fund	Oliver Charitable Fund	Society to Assist Persons of Education Fund	Zdraveski Charitable Fund 1
Family, Friends & Furry Animals Memorial Fund	IWP Charitable Fund	Lyn Grigg Family Fund	One Life Sports Foundation Fund	Stewart Family Fund	Zdraveski Charitable Fund 2
Farrow Family Charitable Fund	Izaak Robison Family Fund	Lyons Family Fund	Onemda Fund	Stuart Shaw Family Fund	Zdraveski Charitable Fund 3
Freeman Family Fund		M & B Jenkins Fund	OPA! Charitable Fund	Supporting Angels Charitable Fund	
		M J Trehella Fund	Oxford Houses Fund	Sweet Princess Charitable Fund (in memory of Nicole Bresley)	
		M Recht Accessories Fund	Pam Baker Fund		
		MacRobertson Girls High School Fund	Patricia Cosh Fund		
		Malcolm Grant Brown Fund	Patricia Farrant Fund		
			Paul & Ruth Permezal Fund		

We acknowledge the Charitable Fund Accounts that choose to remain anonymous.

Swanson Society

CELEBRATING THE COLLECTIVE LEGACY AND GENEROSITY OF OUR DONORS

Lord Mayor of Melbourne Sir John Swanson is acknowledged as the founder and first president of The Lord Mayor's Fund for Metropolitan Hospitals and Charities.

When Sir John established the Fund in 1923, he envisioned an endowment scheme to grow an income in perpetuity so that hospitals and charities would receive a reliable income to plan for public healthcare needs and maintenance.

When Sir John passed away in February 1924, he left a gift of £500 in his Will to the Fund. This would become the beginning of the Fund's endowment scheme.

In September 2015 the Swanson Society was launched to honour valued donors who have included a gift in their Will to the Foundation. It provides opportunities for donors to engage with the Foundation's vision for positive social change, and to learn more about the work of the Foundation, the social issues of the day, and the impact of participating in community philanthropy.

A Swanson Society morning tea was held on 14 June 2024 at the Melbourne Town Hall to celebrate the legacy of Sir John Swanson by recognising the collective impact and generosity of our donors as well as the ongoing impact of our grant program.

The celebration opened with a Welcome to Country by Wurundjeri Elder Uncle Perry Wandin, before we thanked Sally Capp AO for her incredible support of Lord Mayor's Charitable Foundation during her term as Lord Mayor and our Honorary Patron. The Foundation's new Chair, Janina Gawler, was introduced before joining our CEO, Peter Walton, for a Q&A session with guests.

We thank our donors who have made the very personal decision to leave a gift in Will.

Gifts in Wills

For 100 years Lord Mayor's Charitable Foundation has been the trusted custodian of gifts and bequests from many generations of donors. The Foundation is very grateful to our donors for their commitment to a legacy for the health and wellbeing of future generations. We acknowledge bequests received by the Foundation in 2023-24 and express our condolences to the family and friends of these generous donors.

BEQUESTS

Estate of Lorna Jessie Cooper



The Foundation's Board and staff joined donors at the Swanson Society morning tea held at the Melbourne Town Hall, 14 June 2024.

Fifty Years of Giving

A LIFETIME OF GIVING AND COMMUNITY SERVICE VALE FRANK SIMS

Not many of our donors have celebrated their own centenary, but Frank Sims, one of the Lord Mayor's Charitable Foundation's most respected donors, was 100 years old when he passed away in May this year.

Frank, and his wife Meg, first became donors 50 years ago after responding to one of the Foundation's annual fundraising appeals.

In 2010, after Meg had passed away, Frank established a charitable fund account to honour her life as a dedicated wife, mother and generous community volunteer and supporter.

Frank grew up in Abbotsford during the Depression years and used to recall the great community spirit that was experienced then. He often spoke of how everyone looked out for each other, such as when his father was ill in hospital. This kindness left a lasting impression. He felt he had had a fortunate life and liked to help when he could.

After enlisting on his 18th birthday in the Royal Australia Airforce, Frank was soon sent to Canada for training and then on to England during World War 2. For three years he was part of an Allied forces team and was stationed in Scotland.

Frank and Meg were married in 1947 and settled into family life with their son and daughter, and watched as their family grew to include eight grandchildren and four great grandchildren.

Frank's career spanned 45 years with the State Electricity Commission and by his retirement he was the director of human resources overseeing a workforce of 23,000 staff.

Fifty years of Frank's support has touched many lives and now his legacy lives on through his Charitable Fund and generous gift in his Will. With this final gift, Frank's desire to help others continues in perpetuity and with an increased impact for the areas of support Frank was so passionate about.

The Foundation has recently welcomed Frank's daughter Elizabeth as fund successor. She had this to share about her father's commitment to supporting community:

"My Dad had great Christian faith all his long life. He was sustained by it, motivated by it, strengthened by it, in all he faced in life. He showed his faith in his love of people he helped them all financially and practically.

"Privately and without fanfare, Dad made a huge contribution to the welfare and happiness of recipients of charities through the Meg and Frank Sims Fund that he established through the Lord Mayor's Charitable Foundation. The Fund is huge for a man not of great wealth."



(Above) Frank Sims was dedicated to supporting charitable causes and his local community throughout his life.

Community Charitable Funds

STRENGTHENING NEIGHBOURHOODS

The Lord Mayor's Charitable Foundation was established with a single purpose: to harness and direct the generosity of Melburnians to where it could do the greatest good for their fellow residents in need.

Community Charitable Funds are a type of sub-fund that perfectly reflects this goal. Community Charitable Funds provide local communities with an opportunity to encourage philanthropy and direct residents' collective fundraising towards strengthening the local area through the empowerment of local charities.

The Foundation hosts twelve Community Charitable Funds, established by local councils. They are advised by a committee of representatives from the local community and may include council staff. Committees enable local expertise to guide where there is the greatest need.

The Foundation holds and invests the donated funds, provides governance and grant making support, while local communities encourage giving from residents, businesses and their staff to help support their community in perpetuity. Donations are raised via community events and communications. All resulting in a positive ecosystem of support.

LOCAL GOVERNMENT
AREAS WITH
COMMUNITY FUNDS

11

GRANTS

38

FUNDING

\$244k

Banyule Charitable Fund

TOTAL GRANTS: \$12,671

Diamond Valley Community Support Inc

Brimbank Community Charitable Fund

TOTAL GRANTS: \$20,076

Australian Neighbourhood Houses And Centres Assoc.

St. John Ambulance Australia (Victoria) Inc

Casey Cardinia Foundation Charitable Fund

TOTAL GRANTS: \$10,917

Adventist Development and Relief Agency Aust Ltd

Frankie's Community Kitchen Inc

Moy-Yan Neighbourhood House Inc

Frankston Community Fund

TOTAL GRANTS: \$40,535

Frankston Churches Community Breakfast Inc

Mi-Life Victoria Inc

Operation Larder Incorporated

Pines Community Mens Shed Inc

Share the Dignity Ltd

The Pyjama Foundation Ltd

Theodora House Inc

Hume Charitable Fund

TOTAL GRANTS: \$16,061

Banksia Gardens Association Inc

Careworks Sunranges Inc

Merri Outreach Support Service Ltd

Second Chance Animal Rescue Inc

The Salvation Army (Vic) Social Work

Uniting (Victoria and Tasmania) Ltd

Kingston Community Charitable Fund

TOTAL GRANTS: \$72,828

Bayside Community Care Inc

Brainwave Australia Ltd

Cancer Patients Foundation Ltd

Chelsea Community Support Services Inc

Community First Responders Foundation Ltd

FareShare Australia Inc

Make A Difference Dingley Village Inc

Melbourne Anglican Benevolent Society Inc

St. John Ambulance Australia (Victoria) Inc

Team Sports 4 All Pty Ltd

The Give a Care Foundation Inc

Manningham Community Fund

TOTAL GRANTS: \$20,723

Doncaster Community Care Counselling Centre

Kevin Heinz Garden Centre Inc

St. John Ambulance Australia (Victoria) Inc

Mornington Peninsula Community Charitable Fund

TOTAL GRANTS: \$11,871

Frankston Mornington Peninsula Local Learning and Employment Network Inc

Pathways Innovation Fund

TOTAL GRANTS: \$4,277

Unison Housing for Make Room Project

Wyndham Charitable Fund

TOTAL GRANTS: \$11,579

Werribee Baptist Church and Wyndham Community Benevolent Foundation

Yarra City Council Room to Create Charitable Fund I

TOTAL GRANTS: \$16,721

Dancehouse Inc

Agency Projects Trust

Fifteen years of collaborative support

Two of our Community Charitable Funds recently celebrated 15 years of supporting community – both the Frankston Community Fund and the Brimbank Community Charitable Fund were established in 2009.

Each Local Council Area has a unique profile, community needs and priorities.

The Frankston Charitable Fund, based in the southeast of Melbourne, aims to raise much-needed funds to assist charitable organisations that operate within the Frankston community. Grants most recently supported seven charities who between them are addressing a range of areas including food security, period poverty, support for those with a disability, enhancing outdoor spaces at local schools, and providing education resources for volunteers who visit children in care.

The Brimbank Community Fund, located in the west of Melbourne, supports projects that provide grass roots solutions to challenges faced by the municipality's most vulnerable residents. The Fund is chaired locally by a former Brimbank Mayor. Their most recent grants focus on health and wellbeing and life-long learning programs largely facilitated through Neighbourhood/Community houses and Youth Clubs. In addition, the recent funding of defibrillators at four Neighbourhood House locations will improve the heart safety of the community and help save lives.



Recipients of Frankston Charitable Gifting Fund grants for 2024 were announced at an event hosted by Frankston City Council. Mayor Nathan Conroy (centre) announced the seven charities receiving grants from the Frankston Charitable Fund this year.



Brimbank Community Fund grant recipients Duke Street Neighbourhood house – Jessica Kendall (Secretariate), Louis Beunder and Margaret Giudice (Chair).

Collective Giving

PARTNERSHIPS FOR CHANGE

Our vision is for a better, fairer Greater Melbourne for generations to come. There are many ways people give through Lord Mayor's Charitable Foundation. Appeals are one way for them to come together for a common cause that is meaningful to them.

In 2024 Lord Mayor's Charitable Foundation piloted GIVE Melbourne, an online fundraising campaign that was a collaboration with three of our project partners; Infoxchange, Good Cycles and Sweltering Cities – three of the for-purpose organisations that call the Hub their home.

It was wonderful to see people rallying for Melbourne and coming together to support communities cope with the increasing effects of climate change, tackle homelessness, and create inclusive employment opportunities in Greater Melbourne.

Lord Mayor's Charitable Foundation are grateful to our donor community who made 139 donations during the Appeal, and particularly to the 46 new donors who came on board.



How the GIVE Melbourne appeal donor contributions helped:

LORD MAYOR'S CHARITABLE FOUNDATION

The For Purpose Impact Accelerator Hub provides support and co-sharing spaces for organisations to get great ideas off the ground and scale their impact.

SWELTERING CITIES

Rising heat is a health emergency that impacts some of our most vulnerable community members. Sweltering Cities works directly with communities in our hottest suburbs to campaign and advocate for more liveable, equitable and sustainable cities. They do this so people who live in hot suburbs and homes have the option to stay safe in heatwaves, and for our cities to be transformed to reduce carbon emissions and be safe in our future climate.

GOOD CYCLES

Good Cycles' Youth Employment Program uses a work-first approach, offering jobs to people aged 18-29 with real income alongside tailored coaching and support. The 'learn by doing' approach is offered with personal choice and an inclusive workplace to deliver technical and transferable skills. Long-term employment alongside support helps build confidence, stability and networks, enabling young people to continue to overcome barriers and achieve their full potential.

INFOXCHANGE'S ASK IZZY

The Ask Izzy website bridges the gap between the daily crises countless individuals face every day – such as food insecurity and homelessness – and the help they urgently need. Without requiring mobile data, this free, anonymous platform connects users to an up-to-date directory of over 430,000 essential services across Australia, such as housing, meals, and counselling.



Celebrating a Decade of Impact

MELBOURNE WOMEN'S FOUNDATION

The Melbourne Women's Foundation recently marked its 10th anniversary, staying true to its roots of uniting individuals driven to make a difference in the lives of women.

Founded in 2014 by Patricia Burke OAM and Gillian Hund OAM, Melbourne Women's Foundation (MWF) has grown into one of Australia's most recognised giving circles. It uniquely combines community spirit with significant social impact for the benefit of women and families in Greater Melbourne. Initially launched as Melbourne Women's Fund with the support of the Lord Mayor's Charitable Foundation, Melbourne Women's Foundation is now a thriving independent foundation with 160 members and its first CEO, Liza Nadolski.

At the recent anniversary celebration, Patricia and Gillian were honoured for their dedication to women's collective philanthropy. Since beginning in 2014 with 87 members, Melbourne Women's Foundation will have granted approximately \$1.5 million to nonprofits addressing critical issues facing women and families across Greater Melbourne by the end of 2024.

Melbourne Women's Foundation's community-driven philanthropy has positively impacted many women's lives by strengthening nonprofits and fostering community connections. In 2023, it received global recognition from Philanos, an international network of giving circles. Mary Latham, former CEO of Women and Mentoring, shared how MWF's initial funding unlocked further resources and credibility, reinforcing the "giving circle magic."

Lord Mayor's Charitable Foundation's CEO Peter Walton, commended Melbourne Women's Foundation:

"On behalf of Lord Mayor's Charitable Foundation, I would like to congratulate Melbourne Women's Foundation for reaching this incredible milestone, and inspiring collective giving in Australia. Many nonprofit organisations will continue to benefit from your thoughtful leadership and impact through your grant making."

> Melbourne Women's Foundation co-founders Patricia Burke OAM and Gillian Hund OAM celebrated 10 inspiring years of MWF with members at a special anniversary event.



Finance and Investment Report

LORD MAYOR'S CHARITABLE FOUNDATION CONSOLIDATED GROUP

INVESTMENT APPROACH

Our corpus of \$262.5 million has been built up over a century through the careful investment of bequests and gifts during the lifetimes of many committed donors. The Lord Mayor's Charitable Foundation has taken some significant steps during financial year 2023-24 in some key areas of focus and enhancements for the investment portfolio.

The priorities included:

- Maximise the investment portfolio's returns in line with the Foundation's risk tolerance.
- Continue to progress our transition to a net zero-carbon portfolio (our decarbonisation journey).
- Build further momentum within the Foundation's Impact Investment strategy.

The Foundation's Investment Advisors, Cambridge Associates team has played an important role in advising and working with the Foundation to progress on these priorities.

Key developments during the financial year:

- A new Australian Equities manager was appointed in the last quarter of the financial year and onboarded during July 2024. Four new investment funds were approved by the Investment Committee, within the Infrastructure, Impact and Private Equity allocations, of which three were focused on climate and sustainability.
- The Foundation implemented during November 2023, a change in International Equities to track the MSCI World ex-Australia Climate Paris Aligned Index for improved climate alignment.
- Decarbonisation activities included an annual measurement of the Foundation's carbon footprint for its investment portfolio, a detailed carbon and ESG review of each asset class, and strategies to further reduce the portfolio's carbon footprint and increase climate-aligned investments.

MANAGING RISK

The Foundation's Investment Committee and Board considered the investment risk metrics to further develop the investment philosophy of the Foundation. The risk appetite and budget address the challenges of maximising returns, maintaining corpus assets, and growing grant distributions at an acceptable level of investment risk. During the Investment Policy Statement review undertaken this financial year, the Foundation maintained its risk appetite and investment risk profile and its return target to CPI +4.5%. This approach assists the Foundation to have confidence regarding the sustainability of its distributions from the corpus for grants and operating activities and without impacting the volatility of the investment returns over time.

The Board maintains a risk budget characterised by risk metrics which are monitored by the Investment Committee in consultation with its advisors. The risk metrics comprise:

1. Return target – at least CPI +4.5% p.a. measured over rolling 10 years;
2. Volatility of Distributions – expected worst case annual distribution volatility of 15%;
3. Drawdowns – expected worst case drawdown (loss) over 3 years of 25% of the corpus value.

STRATEGIC ASSET ALLOCATION

The Foundation, as the trustee of perpetual charitable funds, adopts a long-term investment view. A balanced approach is required to continue growing the consolidated investment corpus and level of distributable income available to provide grants to charities. In uncertain economic times, it is all the more important that we take a disciplined, long-term approach in managing the portfolio.

The SAA is reviewed every year, there were no material changes during the year. The Committee focused on researching and implementing opportunities in Private Equity, Impact Investments and Infrastructure. The benefits of these changes include enhanced return potential, increased diversification, exposure to new strategies and markets, and an abundant choice of quality sustainability and impact specific funds. Impact investments must deliver both an acceptable financial return and a demonstrated social and/or environmental benefit.

The Foundation continued to adopt an opportunistic approach through dynamic asset allocation within the SAA during the year. Rebalancing between asset classes is undertaken in consultation with our external investment advisor. Australian and International Equities are overweight, but these partially offset the underweight allocation in Private Equities and Impact Investments.

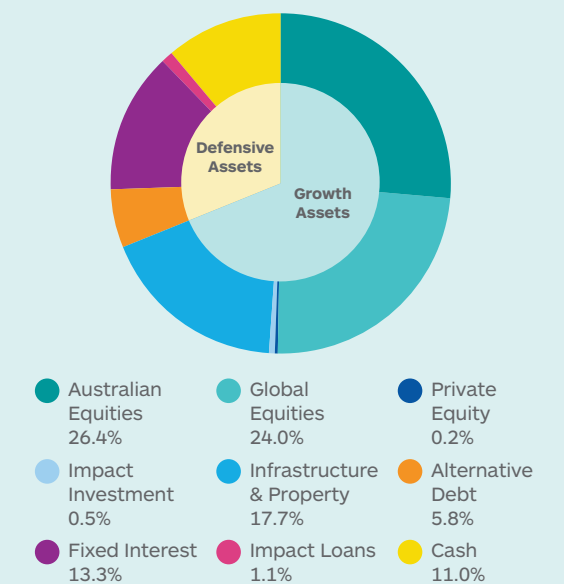
Rebalancing opportunities generated \$9.564M in realised capital gains during the year, (2023: \$3.172M). At the end of June 2024, the actual asset allocation comprised 68.8% growth assets with 24% foreign currency exposure.

INVESTMENT PORTFOLIO AS AT 30 JUNE 2024

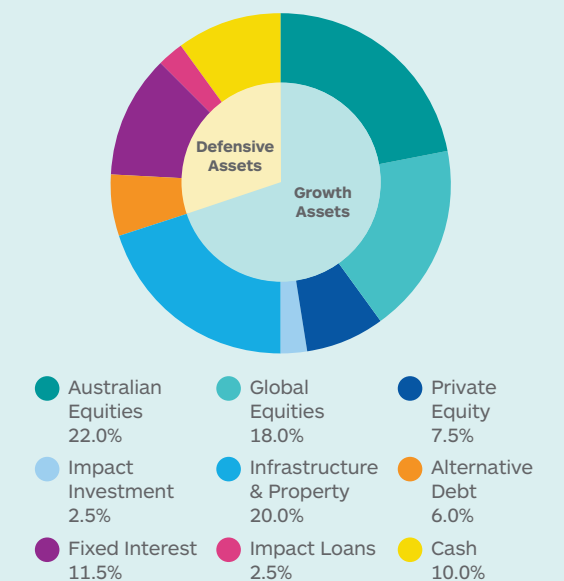
ASSET CLASS (SUMMARY)	AAA%	LTSAA%	LTSAA RANGES %
Total Growth Assets	68.8%	70.0%	60 - 75%
Total Defensive	31.2%	30.0%	25-40%
Total Portfolio	100.0%	100.0%	
Liquid Assets (%)	25.3%	38.5%	
Currency Exposure (%)	24.0%	18.0%	

Note:
LTSAA - Long Term Strategic Asset Allocation
AAA - Actual Asset Allocation

INVESTMENT PORTFOLIO AS AT 30 JUNE 2024 AAA%



INVESTMENT PORTFOLIO AS AT 30 JUNE 2024 LTSAA%



Finance and Investment Report

LORD MAYOR'S CHARITABLE FOUNDATION CONSOLIDATED GROUP

INVESTMENT PERFORMANCE

Financial year 2023/24 delivered a strong performance. International Equities finished the year strongly and was a major contributor to performance. Tech-heavy markets in the US and Asia lead positive growth in equity earnings, as well as increased enthusiasm in AI. Other top contributors to performance were Australian Equities, Infrastructure and Alternative Debt. Financial markets

Most major global central banks (excluding Australia) have started to cut interest rates in response to moderating inflation and a weaker economic outlook. However, the effectiveness of these measures will depend on various factors, including consumer confidence, global trade dynamics and geopolitical developments. As central banks navigate this complex environment, they must balance the need for economic support with the risk of reigniting inflationary pressures.

The Foundation is preparing for further volatility ahead and Cambridge Associates will continue to monitor the investment portfolio to ensure that it can withstand the current market uncertainties that could result in headwinds facing markets in the near and likely medium term.

PERFORMANCE SUMMARY YEAR ENDED 30 JUNE 2024

Net Performance after fees	5 years % pa	3 years % pa	FY 24 % pa
Total Return	5.4%	5.9%	8.6%

PERFORMANCE SUMMARY

The diversified construct of the Foundation's investment portfolio has ensured that the impacts of market volatility were limited with an annual return for the financial year of 8.6%, outperforming its benchmark of 8.3% by 0.3%. Since inception of the new investment strategy in mid-2017, the LMCF portfolio returned 6.0% annualised, net after fees.

The Foundation is invested in a portfolio that is diversified across asset classes to generate returns that are not only competitive, but sufficiently steady to ensure year on year the Foundation's granting can be consistently maintained to meet multi-year programs.

ASSET CLASS	FUND MANAGERS	% OF TOTAL PORTFOLIO 30/6/24	LTSAA ¹
Australian Equities	Solaris Investment Management Yarra Capital Management	26.4%	22.0%
International Equities	Northern Trust Global Asset Management	23.6%	18.0%
Cash & Cash Transaction Fund	Banks IFM Cash Transaction Fund	11.0%	10.0%
Infrastructure & Property	Igneo Infrastructure Partners Dexus Wholesale Property Ltd	17.7%	20.0%
Fixed Interest	BlackRock Investment Management (Australia) Ltd	13.3%	11.5%
Alternative Debt	IFM Investors Pty Ltd Metrics Credit Partners	5.8%	6.0%
Impact Investments & Loans	Various Managers	1.6%	5.0%
Private Equity	Adamantem Capital	0.2%	7.5%
TOTAL		100%	100%

¹ Long Term Strategic Assets Allocation

NET-ZERO CARBON PORTFOLIO, AND SUSTAINABLE AND IMPACT INVESTMENTS

As part of the Foundation's process of developing and implementing a sustainable investment strategy across the portfolio, the Foundation took the following actions:

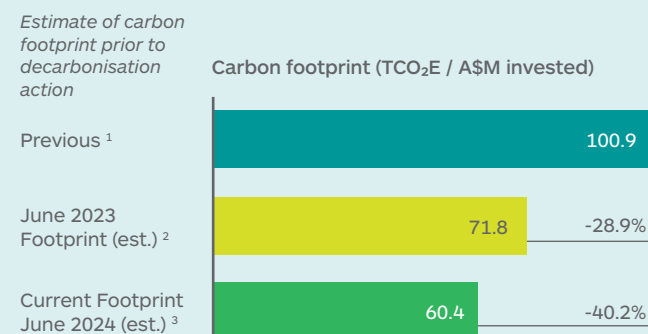
- In April 2023 the Foundation appointed Australian Impact Investments to further enhance its impact investment approach and strategy.
- The Foundation's International and Australian Equities asset classes have fossil fuel exclusions, (being companies that derive 10% of revenue from thermal coal, oil and gas extraction).
- The Foundation's International Equities portfolio was changed to track the MSCI World ex-Australia Climate Paris Aligned Index which is aligned with achieving a 1.5% temperature rise scenario and has a self-decarbonisation rate of 10% year on year.
- Approved three new funds with an environmental focus that span across Australian Equity, Infrastructure, Private Equity, and Impact Investments.
- Continual monitor of existing Fund managers to influence and promote change.

The above actions are estimated to have reduced the investment portfolio's carbon footprint by nearly 40%.

Finance and Investment Report

LORD MAYOR'S CHARITABLE FOUNDATION CONSOLIDATED GROUP

DECARBONISATION - INCREMENTAL STEPS ADD UP



APPROVED CARBON RELATED ACTIONS

- **Australian Equity**
 - Add in fossil fuel exclusion - 10% revenue threshold from fossil fuels (thermal coal, oil and gas)
- **Global Equity**
 - Add fossil fuel reserves exclusion - 10% revenues threshold from fossil fuels (thermal coal, oil and gas)
 - Change NT mandate to MSCI Climate Paris Aligned Index
- **Private equity**
 - Commit A\$3.5m to Adamantem Environmental Opportunities Fund I
 - Commit ~ A\$3.0m to Activate Capital Fund III
- **Infrastructure & Property**
 - Increase allocation to renewable infrastructure
 - Commit ~ A\$5.0m to Copenhagen Infrastructure Partners Fund V
 - Commit ~ \$4.6m to Climate Adaptive Infrastructure Fund III
- **Fixed Income**
 - No Change - Blackrock has an ESG mandate
- **Alternative Debt**
 - No change - Engage with managers to decarbonise the portfolio

¹ Previous carbon footprint is calculated using MSCI World ex-Australia index as global equity to indicate carbon footprint without decarbonisation overlay

² Both Igneo's GDIF and Metric's DASLF revised their prior year carbon footprints citing a change in methodology to better align with the industry accepted PCAF emissions accounting framework. Igneo revised their carbon footprint down by 37% and Metrics revised their carbon footprint up by 119%

³ The FY24 carbon footprint of the portfolio was reweighted to exclude cash, impact loans, private equity and impact investments

The carbon footprint is calculated using MSCI data for listed funds, and manager reported data for unlisted funds. Most asset classes are included (excludes cash, impact investments and impact loans), and the footprint is scaled up for assets not covered in the analysis.

Going forward, the transition to a net-zero carbon portfolio is likely to include a blended approach between divesting assets, adding climate-aligned investments and working with our fund managers to ensure portfolio companies are working to decarbonise. For each asset class, the approach will be different.

FINANCIAL PERFORMANCE

The Foundation managed its operating and grants budget closely during 2023/24, closing the year within its spending rule parameters. Strategic and donor-advised grants of \$11.457M were made. The Foundation monitored its operating expenditure closely during the year, as it relocated to its new premises and set up the For Purpose Impact Accelerator Hub. The Hub is a vibrant centre generating Impact for the NFP sector.

Management in consultation with Cambridge Advisors reviewed the Spend Rule methodologies for its total spend for grants and operating expenditure. The Foundation is transitioning from its current Hybrid Spend Rule to the Trailing Market Value approach. The change will be in a staged approach over three years. The transition to the Trailing Market Value approach will assist further in maintaining the real value of the investment corpus over time.

LOOKING AHEAD

The Investment Committee will adhere to the philosophy of investing for the long term with a diversified portfolio mix of both growth and defensive assets and with a greater focus on growth and diversification, the Foundation is positioned to generate higher returns over a long-term horizon.

As we enter the new financial year and given the macroeconomic uncertainties lying ahead, including slowing economic growth due to higher interest rates and inflation pressure and potential softening demand, we remain vigilant and nimble in our investment approach. The Foundation has sufficient liquid assets to enable us to opportunistically deploy into the equity markets if they become more attractive and invest in new asset classes for greater portfolio diversity. The Investment Committee will continue to balance risk and return within the Board's approved risk appetite to provide a strong, reliable, and growing funding stream in conjunction with growing long-term corpus investments.

Consolidated Statement of Profit or Loss and Other Comprehensive Income

FOR THE FINANCIAL YEAR ENDED 30 JUNE 2024

	2024 \$	2023 \$
INCOME FROM CONTINUING OPERATIONS		
General revenue	1,778,912	3,528,135
Corpus revenue	21,081,606	12,845,444
Net Unrealised gain on financial assets at fair value through Profit or (loss)	5,277,393	12,470,381
TOTAL INCOME FROM CONTINUING OPERATIONS	28,137,911	28,843,960
EXPENSES FROM CONTINUING OPERATIONS		
Employee Benefits	(2,985,835)	(2,589,315)
Marketing and development expenses	(194,121)	(282,610)
Depreciation and amortisation	(381,703)	(202,848)
Interest Expense: Lease Liability	(93,122)	(3,412)
Other operating expenses	(1,595,419)	(1,731,076)
TOTAL EXPENSES FROM CONTINUING OPERATIONS	(5,250,200)	(4,809,261)
SURPLUS FOR THE FINANCIAL YEAR BEFORE GRANTS APPROVED	22,887,711	24,034,699
GRANTS APPROVED		
Grants approved	(11,456,828)	(12,931,933)
SURPLUS FOR THE FINANCIAL YEAR	11,430,883	11,102,766
OTHER COMPREHENSIVE INCOME	-	-
TOTAL COMPREHENSIVE INCOME FOR THE FINANCIAL YEAR	11,430,883	11,102,766

BASIS OF PREPARATION

The summary financial statements are derived from the audited financial report of the Lord Mayor's Charitable Foundation Consolidated Group for the year ended 30 June 2024 (the "Audited Report").

The accounting policies relating to recognition and measurements applied in the preparation of summary financial statements are the same as those adopted in the preparation of the Audited Financial Report.

The summary financial statements do not contain all the disclosures required by the Australian Accounting Standards applied in the preparation of the Audited Financial Report.

Consolidated Statement of Financial Position

AS AT 30 JUNE 2024

	2024 \$	2023 \$
ASSETS		
Current assets		
Cash and cash equivalents	29,665,256	34,932,870
Receivables	2,352,972	4,846,941
TOTAL CURRENT ASSETS	32,018,228	39,779,811
Non-current assets		
Financial assets	236,376,083	223,815,898
Loans and advances	2,924,187	2,924,187
Plant and equipment	2,802,821	313,381
Other intangible assets	73,822	8,545
Right-of-use asset	1,814,695	-
TOTAL NON-CURRENT ASSETS	243,991,608	227,062,011
TOTAL ASSETS	276,009,836	266,841,822
LIABILITIES		
Current liabilities		
Payables	1,737,370	3,165,818
Grants authorised for distribution	5,509,488	8,261,860
Employee benefits	253,164	294,772
Lease liability	228,555	-
TOTAL CURRENT LIABILITIES	7,728,577	11,722,450
Non-Current liabilities		
Employee benefits	76,908	57,232
Lease liability	1,711,328	-
TOTAL NON-CURRENT LIABILITIES	1,788,236	57,232
TOTAL LIABILITIES	9,516,813	11,779,682
NET ASSETS	266,493,023	255,062,140
EQUITY		
Corpus & general bequest funds	262,498,443	249,661,990
Funds available to be distributed	3,994,580	5,400,150
TOTAL EQUITY	266,493,023	255,062,140

Declaration by the members of the board

FOR THE FINANCIAL YEAR ENDED 30 JUNE 2024

The LMCF Consolidated Group financial report represents the combined annual financial results of the following individual entities:

- Lord Mayor's Charitable Foundation – ABN 48 042 414 556
- Lord Mayor's Charitable Fund – ABN 63 635 798 473
- The Eldon and Anne Foote Trust – ABN 38 330 915 392

The summary financial statements reflect the results and financial position of the Group for the year ended 30 June 2024. The Consolidated Special Purpose financial report of the Group was approved by the Board on 3 October 2024.

This summary financial report is derived from the audited financial report of the Lord Mayor's Charitable Foundation Consolidated Group for the year ended 30 June 2024.

It has been prepared in accordance with the requirements of the Australian Charities and *Not-for-Profits Commission Act (ACNC) 2012* and Australian Accounting Standards to the extent described in Note 2 of the audited financial report.

This summary financial report is approved by the Board.



JANINA GAWLER

Chair of the Board

Date: 3 October 2024
Melbourne



LINH DO

Chair of the Governance,
Audit and Risk Committee

Date: 3 October 2024
Melbourne

A copy of the full audited financial report may be obtained by emailing info@lmcf.org.au

Deloitte.

Deloitte Touche Tohmatsu
ABN 74 490 121 060

477 Collins Street
Melbourne VIC 3000
GPO Box 78
Melbourne VIC 3001 Australia

Tel: +61 3 9671 7000
Fax: +61 3 9671 7001
www.deloitte.com.au

Report of the Independent Auditor on the Summary Financial Statements to the Members of Lord Mayor's Charitable Foundation

Opinion

The summary financial statements, which comprise the summary consolidated statement of financial position as at 30 June 2024, the summary consolidated statement of profit or loss and other comprehensive income for the year then ended and the related notes (the "summary financial statements"), are derived from the audited financial report of Lord Mayor's Charitable Foundation consolidated group for the year ended 30 June 2024 (the "Audited Financial Report").

In our opinion, the accompanying summary financial statements are consistent, in all material respects, with the Audited Financial Report, on the basis described on in the basis of preparation note.

Summary Financial Statements

The summary financial statements do not contain all the disclosures required by the Australian Accounting Standards applied in the preparation of the Audited Financial Report. Reading the summary financial statements and the auditor's report thereon, therefore, is not a substitute for reading the audited financial report and the auditor's report thereon. The summary financial statements and the audited financial report do not reflect the effects of events that occurred subsequent to the date of our report on the audited financial report.

The Audited Financial Report and Our Report Thereon

We expressed an unmodified audit opinion on the audited financial report in our report dated 3 October 2024.

Other Information

The Directors are responsible for the other information. The other information comprises all information in the annual report 2023-2024, but does not include the summary financial statements (on pages X to X) and our auditor's report thereon.

Our opinion on the summary financial statements does not cover the other information and we do not express any form of assurance conclusion thereon.

In connection with our audit of the summary financial statement, our responsibility is to read the other information and, in doing so, consider whether the other information is materially inconsistent with the summary financial statements or our knowledge obtained in the audit or otherwise appears to be materially misstated. If, based on the work we have performed on the other information that we obtained prior to the date of this auditor's report, we conclude that there is a material misstatement of this other information, we are required to report that fact. We have nothing to report in this regard.

The Directors' Responsibility for the Summary Financial Statements

The Directors are responsible for the preparation of the summary financial statements on the basis described on in the basis of preparation note.

Auditor's Responsibility

Our responsibility is to express an opinion on whether the summary financial statements are consistent, in all material respects, with the audited financial report based on our procedures, which were conducted in accordance with Auditing Standard ASA 810 *Engagements to Report on Summary Financial Statements*.



DELOITTE TOUCHE TOHMATSU



Mark Stretton
Partner
Chartered Accountants

Melbourne, 17 October 2024

Board Members

AS AT 30 JUNE 2024



JANINA GAWLER

Appointed: 2019
Chair: February 2024
Deputy Chair:
October 2022 – January 2024
Committee: Governance, Audit and Risk (Chair)
Grant Advisory Panel:
Healthy & Resilient Communities (chair), Inclusive, Sustainable Economy & Jobs



BERNADETTE MURDOCH

Appointed: 2019
Deputy Chair: February 2024
Committee:
Strategic Marketing/Centenary (Chair)



DR RAPHAEL ARNDT

Appointed: 2016
Committee:
Investment Committee (Chair)



CRAIG BELL

Chair:
October 2019 – October 2022
Appointed: 2014
Retired: October 2023
Committee: Investment



PAUL BIRD

Chair:
October 2022 – February 2024
Appointed: 2018
Retired: February 2024
Committee:
Investment, Centenary, Governance, Audit and Risk



LINH DO

Appointed: 2021
Committee:
Governance, Audit and Risk, Strategic Marketing/Centenary
Grant Advisory Panel:
Homelessness & Affordable Housing



JANE HANSEN AO

Appointed: 2017
Committee:
Strategic Marketing/Centenary



PROF. ROBERT MCGAURAN

Appointed: 2017
Deputy Chair:
October 2019 – October 2022
Committee:
Strategic Marketing/Centenary
Grant Advisory Panel:
Affordable Housing Challenge (Chair), Homelessness & Affordable Housing (Chair)



MARY NEGA

Appointed: 2023
Committee: Investment
Grant Advisory Panel:
Inclusive, Sustainable Economy & Jobs (Chair)



WEI SUE

Appointed: 2023
Committee: Investment

To read the full biographies of each Board Member, please visit lmcf.org.au/board

Our Staff

AS AT 30 JUNE 2024

EXECUTIVE

Peter Walton
Chief Executive Officer

Kate Stewart
Executive Administrator & Researcher (part time)

GRANTS AND INITIATIVES

Erin Dolan
Senior Program Manager
Homelessness & Affordable Housing

Abbie Dawson
WISE Program Co-ordinator (part time)

Stephen Torsi
Program Manager
Inclusive, Sustainable Economy & Jobs

Dawn Hewitt
Network Co-ordinator
Community Connector for Resilience (part time)

Dr Karyn Bosomworth
Program Manager
Healthy & Climate Resilient Communities (part time)

FINANCE AND OPERATIONS

Darren McConnell
Chief Financial and Operations Officer

Rashelle Boukas
Hub and Foundation Operations Manager

Dianne Street
Senior Finance Manager

Adrian Lindsey
Office and Events Concierge

Jaishma Krishna
Finance Manager

Irena Gray
Grants Administrator

Gearoid Barry
Accounts Payable Officer

DEVELOPMENT

Carolyn Williams
General Manager Development

Samuel Byrne
Philanthropy Engagement Lead

Caitlin Corrales
Major Gifts Specialist

Lonia Catalano
Donor Services Co-ordinator (part time)

Karin McLean
Stewardship Specialist

COMMUNICATIONS

Suzanne Doig
Senior Manager
Communications & Events

Bridget Rosati
Graphic Designer

Stephanie Fichera
Digital Marketing & Content Manager

Independent Committee Members

INVESTMENT COMMITTEE

Jane Simon
Alexandra O'Dea
Louise Lew

GOVERNANCE, AUDIT AND RISK COMMITTEE

Andrew Raftis

NOMINATIONS COMMITTEE

Lord Mayor Sally Capp AO
Carmel Guerra OAM
Vicki Sutton

Grant Advisory Panels

AFFORDABLE HOUSING CHALLENGE

Prof. Robert McGauran (Chair)
Angela Skandarajah
Emma Telfer
Jai Sharma
Carolyn Larcher
Lesley Dredge

HEALTHY & CLIMATE RESILIENT COMMUNITIES

Janina Gawler (Chair)
Irene Verins
Grace Lethlean
Kathryn Bowen
Jessica Barnes

HOMELESSNESS & AFFORDABLE HOUSING

Prof. Robert McGauran (Chair)
Linh Do
Tom Alves
Kate Colvin
Susan Feldman
Emma Telfer

INCLUSIVE, SUSTAINABLE ECONOMY & JOBS


Mary Nega (Chair)
Janina Gawler
Michelle Anderson
Glenn Hoetker


YOUTH IN PHILANTHROPY COACHES

Wendy Lewis OAM
Tony Scott
Angela Wheelton OAM DSJ
Paul Wheelton AM KSJ



LORD MAYOR'S CHARITABLE FOUNDATION

 Wurundjeri Country
Level 4, 454 Queen Street
Melbourne 3000

 Wurundjeri Country
GPO Box 1851
Melbourne 3001

 (03) 9633 0033

 info@lmcf.org.au

Lord Mayor's Charitable Foundation

ABN 48 042 414 556

Lord Mayor's Charitable Fund

ABN 63 635 798 473

The Eldon & Anne Foote Trust

ABN 38 330 915 392

Lord Mayor's Charitable Foundation Act 2017 (Victoria)

Auditors – External

Deloitte Touche Tohmatsu

Auditors – Internal

NTT Global

Consultants and Advisors

RSM Australia

Legal

Gadens Lawyers

Justitia Lawyers



lmcf.org.au

